



**EYEWITNESS FORENSIC – FORENSIC VCR REPORT**  
**Manual**

Version 1.0 RC3

**EYEWITNESS FORENSIC – FORENSIC VCR REPORT  
Manual**

Table of contents

1	Introducing.....	3
2	Installation.....	4
3	Anschlussschema.....	4
4	Start Forensic VCR Report.....	4
5	Main Window.....	5
5.1	Video Settings Section.....	5
5.2	Snapshot Settings Section.....	6
5.3	Generate Video Preview.....	6
5.4	Shoot 1 Buttons.....	7
5.5	Quit Forensic VCR Report.....	7
6	Support.....	8
6.1	Contact Information.....	8

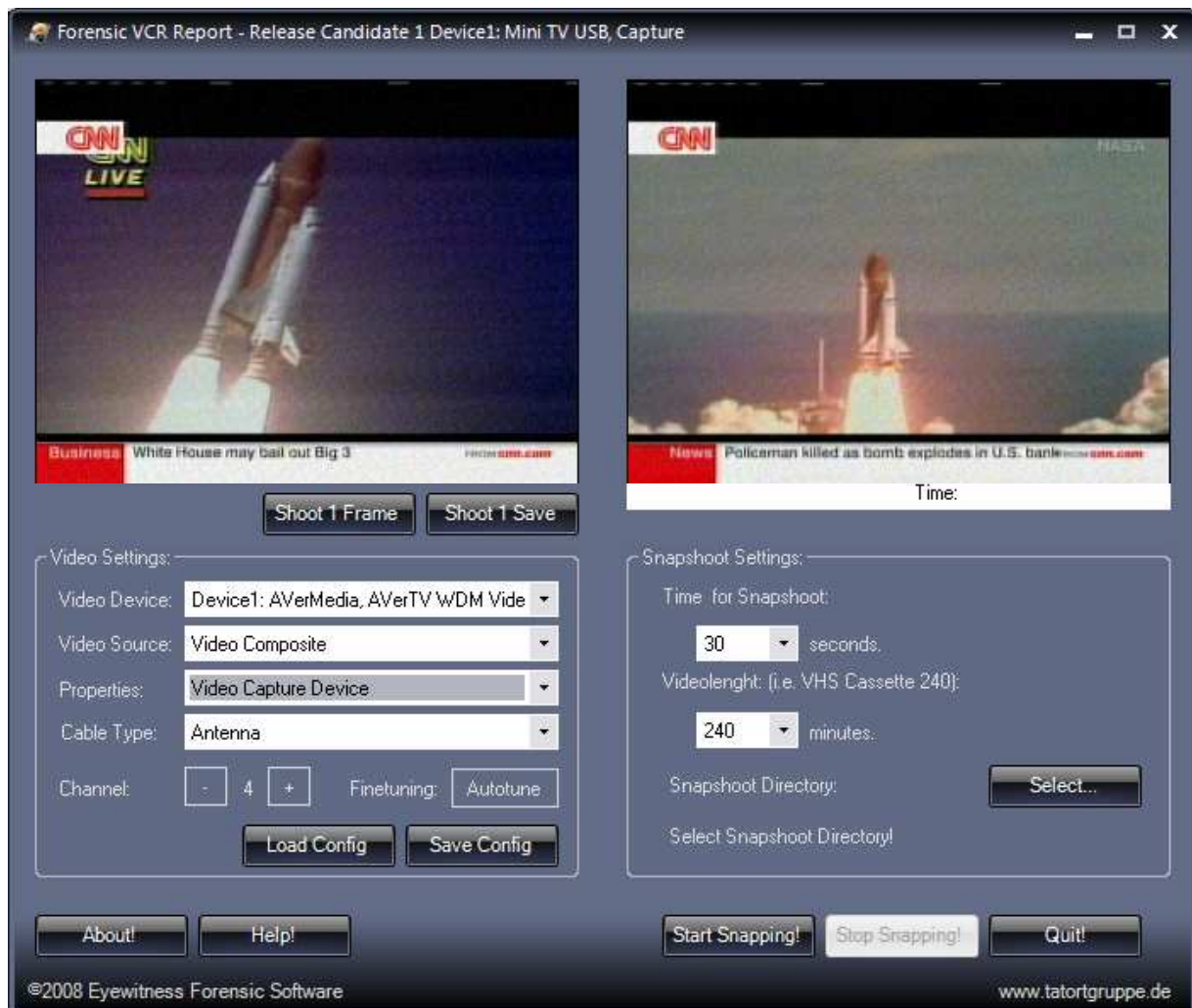
# EYEWITNESS FORENSIC – FORENSIC VCR REPORT Manual

## 1 Introducing

In forensic examinations of video cassettes the examiner often ends up at the point where evidences amount grow up. VHS, Hi8 or DV must be shown to look for “compromised” material within normal tapes.

To shrink the times to examine these evidences this application was developed.

Forensic VCR Report generates Single Frames from Standard Video Input Devices like standard TV Tuner cards of a playing video tape into a directory. It is not necessary to preview the video itself but look at the single frames in the end up directory to see in a overview the content of the video tape.



Due to pre settings of video length and snapshot time you will be able to do a automatic preview of the video overnight without doing more.

Furthermore you can start the application more than once so you can preview more than one video at the same time.

# EYEWITNESS FORENSIC – FORENSIC VCR REPORT Manual

## 2 Installation

Start FVCRSetup.exe for Installation.

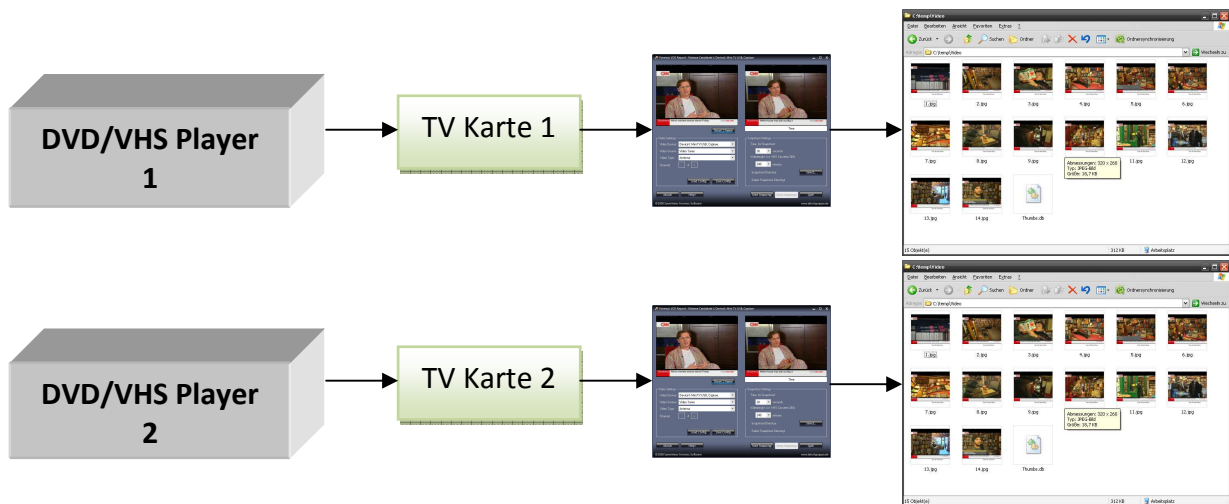
The Setup will guide you through the setup routine. While Installation you can see Update Changes in Info Window.

After Installation you can run the program.



Please note that a actual .NET Framework Package (Version 3.5) from Microsoft is necessary to run Forensic VCR Report!

## 3 Anschlusschema

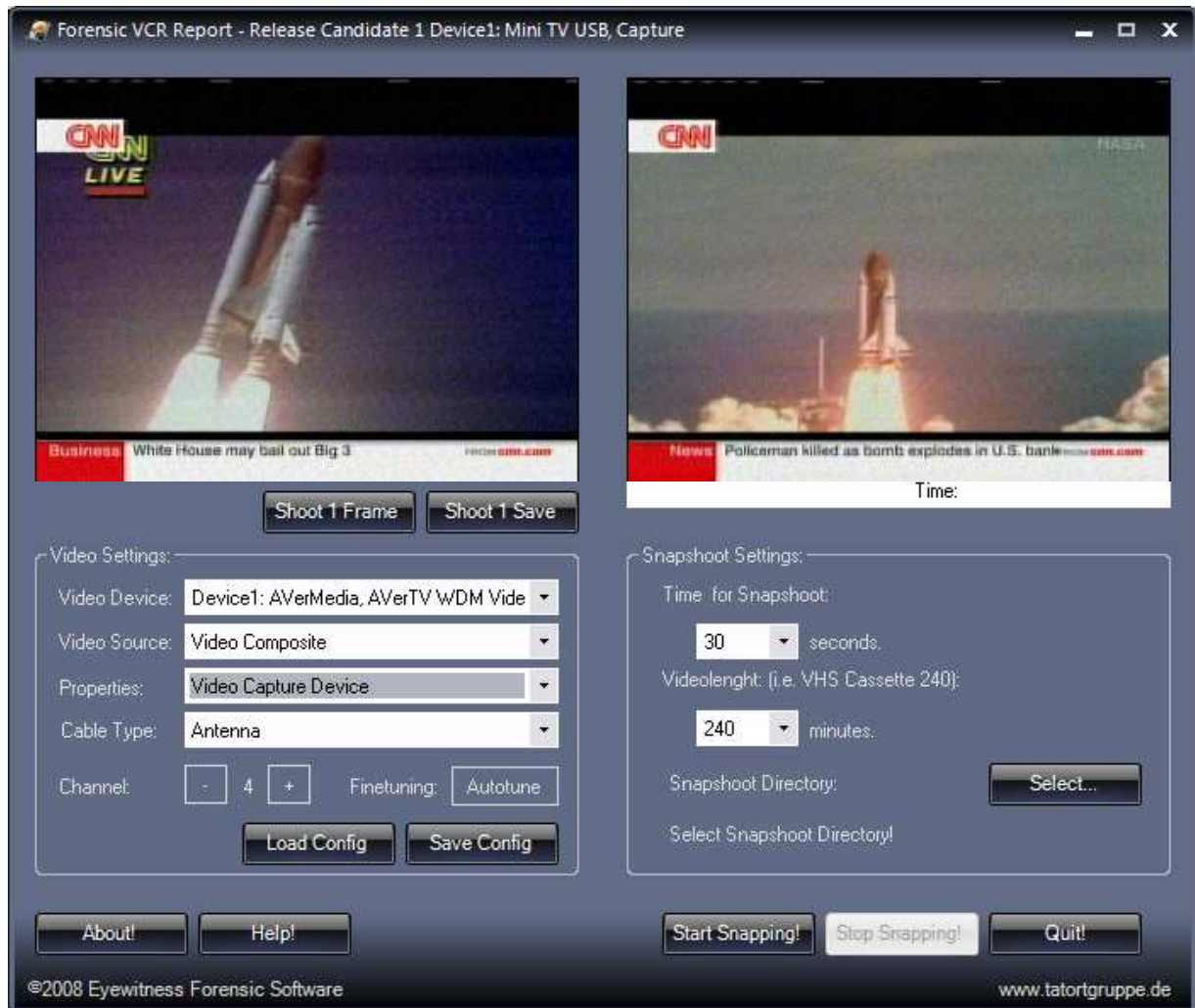


## 4 Start Forensic VCR Report

By clicking the Forensic VCR Report Icon on desktop you can start the application.

# EYEWITNESS FORENSIC – FORENSIC VCR REPORT Manual

## 5 Main Window



### 5.1 Video Settings Section

The video settings section contains all main settings of the video input device.

[Video Device] Shows up all of the found video devices.

[Video Source] Shows up the video sources of the actual video device, i.e. S-Video, Composite or TV Tuner.

[Properties] Opens another video settings window. Here you can put some extended settings like PAL or NTSC. These settings cannot be saved!!!!

# EYEWITNESS FORENSIC – FORENSIC VCR REPORT Manual



[Video Type] Select cable or antenna for TV Tuner.

[Channel -/+ ] Select the channel of active TV tuner.

[Autotune] Automatic Fine Tuning of Tuner channel.

[Load Config] loads any pre saved video configuration.



To open a video device you can also open the saved settings file. The Application starts automatic with the pre saved settings. SO you can save a separate configuration for any used video device.

[Save Config] saves the actual video settings to file.

## 5.2 Snapshot Settings Section

In den Snapshot Settings you can setup the settings for video previews.

In the Snapshot Time you can setup the time between any single snapshots in seconds.

The video length setup the Video VHS Cassettes length of the video evidence. After this time the application stops previewing automatic.

With [Select] you can setup the preview output directory.



The application will overwrite any files if the directory is not empty. Use separate directories for separate evidences!


## 5.3 Generate Video Preview

[Start Snapping!] Start the video previewing. Actual video snaps will be shown in right upper window. After starting the video preview just start video play at the video input device.

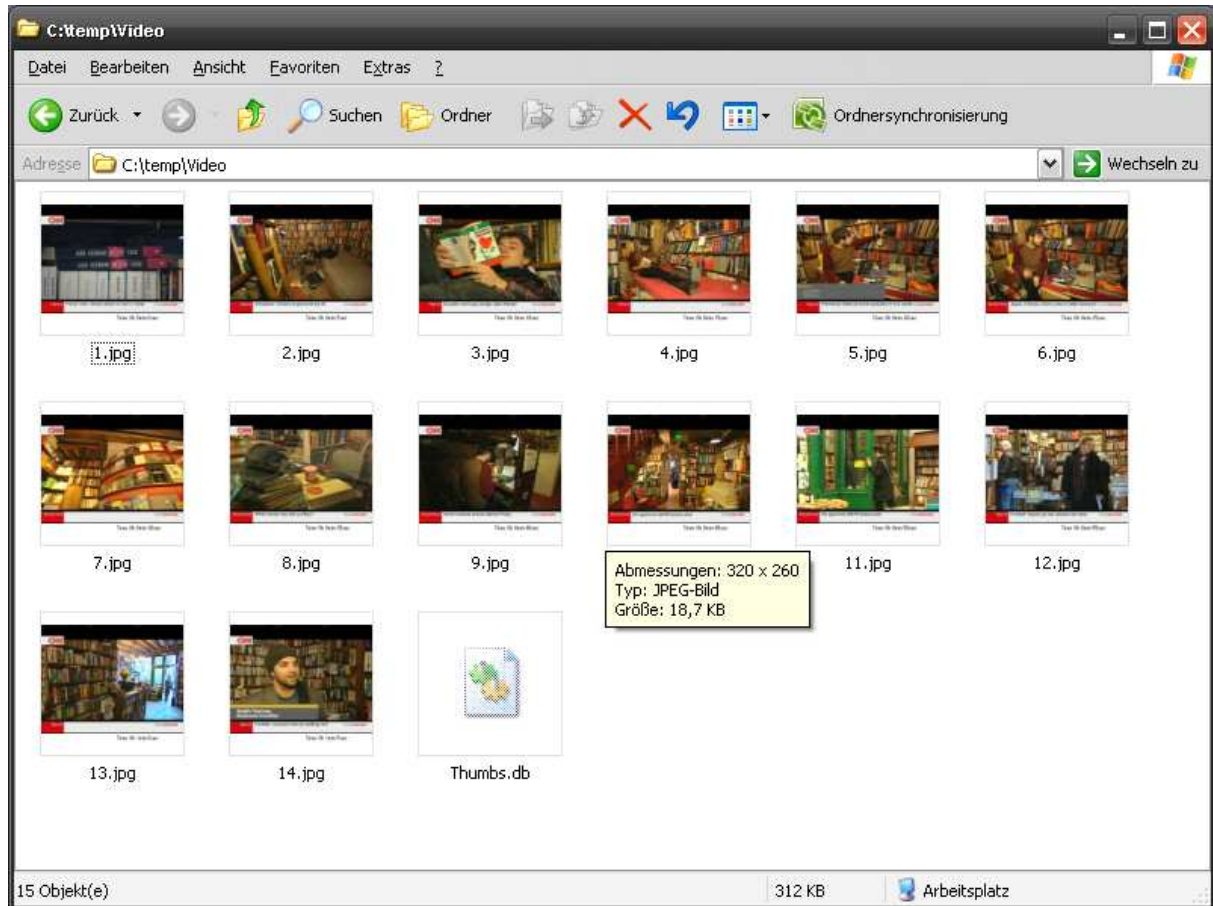
## EYEWITNESS FORENSIC – FORENSIC VCR REPORT Manual

The video preview will be stopped after setup time is reached.

[Stop Snapping!] stops previewing immediately.

 | A Information Window will be shown after Preview finished.

A video preview is shown as following:



### 5.4 Shoot 1 Buttons

With [Shoot 1 Frame] you can independent from automatic modus generate a video frame shoot. This frame can saved with the Button [Shoot 1 Save] as \*.jpeg.

### 5.5 Quit Forensic VCR Report

[Quit] closes the application.

**EYEWITNESS FORENSIC – FORENSIC VCR REPORT  
Manual**

**6 Support**

**6.1 Contact Information**

If you encounter any errors or problems write to support email:

**Ronny.Bodach@tatortgruppe.de**

or look at the FAQ's a tour website:

**[www.tatortgruppe.de](http://www.tatortgruppe.de)**

We will help as soon as possible.

Best success at your evidential work!

Yours

# **EYEWITNESS FORENSIC – FORENSIC VCR REPORT Manual**

©2008-2009 Eyewitness Forensic – Dipl.-Ing. (BA) Ronny Bodach – All Rights reserved

Forensic VCR Report uses Krypton Toolkit® for Skinning Application.

Forensic VCR Report uses DirectShow Interface Library, and CaptureNET Library which is licensed under GNU LGPL.  
For further Information look at: <http://sourceforge.net/projects/directshownet/>